



Supreme Council of Antiquities

GIS CENTER



Contents

• **System Population**
.....p2

• **Historical Sites of Egypt**
'Arab Kulli House
.....p2

• **Collaboration**
Reviving the Mediterranean Cultural Heritage of Rosetta
.....p3

• **Collaboration**
French technical project in Luxor
KOICA Training
.....p4



Issue One
December 2008

The GIS center is the General Department of the Supreme Council of Antiquities (SCA) for geographic information system, directed by Mrs. Azza Shawarby. The department was set as a Centre of Excellence within the Public Sector, to manage and protect the Egyptian Heritage by identifying the location and characteristics of the archaeological sites and monuments. The data is then recorded in a searchable GIS database.

This Newsletter is the first issue for the SCA GIS Centre after the handover of the Egyptian Antiquities Information System Project to the Supreme Council of Antiquities. The GIS Centre is the official Geographic Information System (GIS) General Department of the Supreme Council of Antiquities (SCA). This department was generated by Central Agency for Organization and Administration decree.

The GIS Centre staff, who were strongly developed during the Egyptian Finnish Project, had successfully managed to sustain the normal work activities and even develop new approaches to handle unexpected encounters. The GIS Centre is now continuing the EAIS project main task; which is the creation of a comprehensive digital archive of historical sites in Egypt based on official data acquired from; SCA AMLAAK department, inspectorate, archaeological missions, ESA and Ministry of Agriculture and other sources.

The information processed is also available to the Egyptian authorities and organizations responsible for planning and development to help them protect the archaeological sites and monuments against destructive land use and encroachments.

The GIS Centre's activities also involves establishing strong collaboration channels with other international organizations, e.g. EU and UNESCO, as well as foreign archaeological missions and research institutes to enhance the protection of the Egyptian cultural heritage through knowledge exchange.

QUARRYSAPES WORKSHOP 3 **Aswan 12-15 October 2008**

The General Director of the SCA/ GIS Centre Mrs. Azza Shawarby and Project Team Leader Dr. Naguib Amin participated in the final workshop in Aswan of QuarryScapes project which aimed at documenting, presenting and preserving ancient quarry sites in the eastern Mediterranean of Egypt, Jordan and Turkey.

This SCA participation was to present the Map of Ancient Egyptian Stone Quarries developed at EAIS /GIS centre (QS-Work package 7) reflecting the level of protection for these quarries by the Supreme Council of Antiquities.

This workshop included a fieldtrip to Gabal As-Silsilah, Edfu Temple, Gabal Gulab, Gabal Es-Sawan and the Unfinished Obelisk.

SCA appreciated all the efforts of saving the Quarry sites, not only in Egypt but also in the Mediterranean by all the participants.



System Population

System population is the main task of the GIS Centre, which aims to complete the digital archive of SCA archaeological sites as a step towards improving Egyptian heritage protection.

The procedures of data acquisition are still the same as they were within the EAIS project: the official archaeological site data - maps and legal documents - are acquired from Amlaak (the SCA Survey and Property Department). Current work is I. Ancient Egyptian sites in two new governorates: Asyut and Al-Minya , II. finalization of Islamic/Coptic sites in Qina, Luxor, and Al-Wadi Al-Gadid and will start in Al-Minya and Asyut.

Finalized Governorates Ancient Egyptian Sites:

Governorate	SCA Sites	Unregistered Sites
Ash-Sharqiyyah	110	16
Al-Isma'iliyyah	54	6
Port Said	17	5
North Sinai	34	15
Al-Fayyum	37	34
Ad-Daqahliyyah	49	49
Bani Suwayf	23	36
Damietta	7	15
South Sinai	21	28
Suez	30	4
Al-Qalyubiyyah	16	23
Luxor	23	
Qina	49	19
Al-Wadi al-Gadid	87	37
Al-Minufiyyah	12	18
Al-Gharbiyyah	10	8
Giza	52	8
Matruh	81	38
Asyut		
Al Minya		

Islamic, Coptic and Jewish Sites:

Governorate	SCA Sites	Unregistered Sites
Ash-Sharqiyyah	12	1
Alexandria	41	2
Port Said	7	
Al-Isma'iliyyah	9	
North Sinai	26	
Al-Fayyum	9	
Ad-Daqahliyyah	19	
Bani Suwayf	6	
Qina		
Luxor		
Al-Wadi al-Gadid		
Asyut		
Al Minya		

UPGRADING IN DATA QUALITY SYSTEM:

Following to the processing of System Population data -by GIS, legal and archaeology units - entry in database application is made. As a data quality procedure, a module was added to the database application to provide a real time information about how many sites are entered in the database (per governorate) compared to the number of archaeological sites processed by units.

This module made it easier for the data entry users to track the data entry progress whenever needed. This module exists beside the quarter report about no. of sites processed by units comparing to the total no. of sites per governorate which is being produced for 4 years.

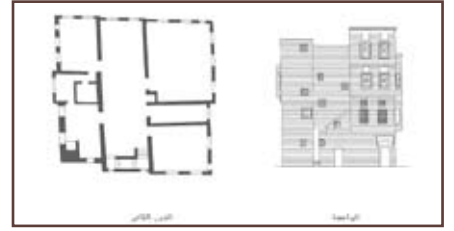
Training held in programming ArcObjects with VBA at GIS Centre, for GIS and database head of units, to improve their abilities for creating a live link between maps in ArcMap and database.

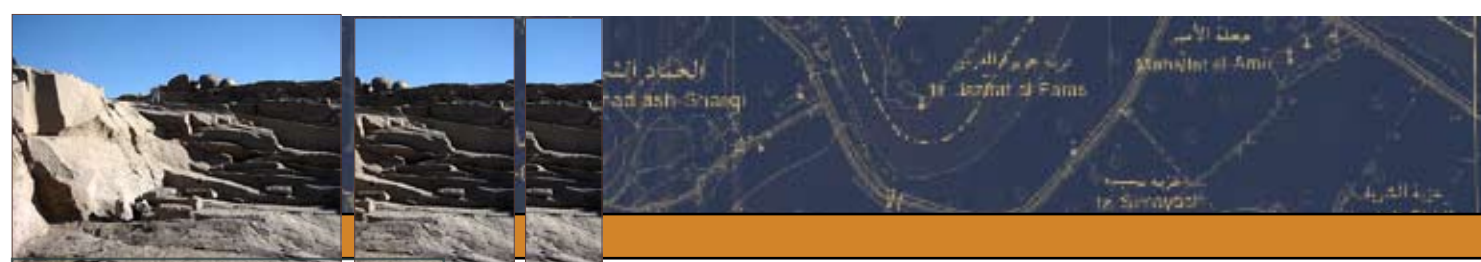
Historical Monuments of Egypt

'Arab Kulli House - The National Museum of Rosetta

'Arab Kulli house was constructed during the first half of the 18th century (12th century A.H) and was the residence of Husayn 'Arab Kulli, the governor of Rosetta from 1844 (1260 A.H.) to 1849 (1265 A.H.). It is a large house with facades built with the red and black m a n g u r bricks typical for the Ottoman houses in Rosetta. On the ground floor was originally a wikalah where shops and sta-

bles were housed next to storage rooms. The two upper floors consist of a number of rooms arranged around a central hall. The house has been under restoration for many years to prepare it for its new role as the National Museum of Rosetta. This new museum houses a number of artefacts and original furniture from the Ottoman houses in the town, in addition to other interesting objects connected to the history of Rosetta. The National Museum of Rosetta supposed to be officially inaugurated on the 15th of November 2008.





Collaboration

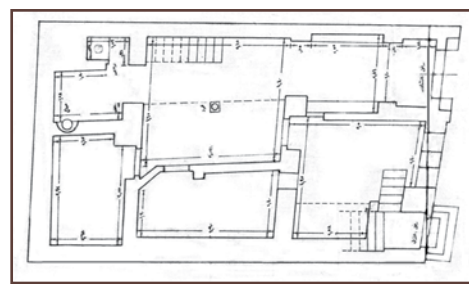
Reviving the Mediterranean Cultural Heritage of Rosetta

The GIS centre started to document Rosetta's cultural heritage through EAIS project in 2004 (see EAIS September and December Newsletters 2006.) and started to publish the results of this documentation In December 2007. A new project funded by a grant from the European Commission's Europaid programme for local actions through collaboration between SCA and EAIS association. This project, aims to highlight the Mediterranean aspects of this little known city and raise the awareness of the significance of its heritage.



It mainly involves two activities which, taken together, will meet the aims mentioned above. The first activity concerns the collection of information about the cultural heritage of Rosetta – ranging from brief histories and current conditions to accurate maps of the town and detailed plans of its Ottoman buildings – and will constitute a comprehensive record of the town. This will be disseminated to professionals and the general public alike in two publications:

The Historical Monuments of Egypt, Vol. 1: Rosetta is intended for the use of heritage professionals in general, and local heritage authorities in particular, in the management of the monuments. It will contain data concerning the monuments' official legal status, their history and current condition; information vital for their continuous protection. It will be displayed on maps and presented in tables and texts accompanied with architectural drawings and photographs. A small guide to the monuments and culture of Rosetta for domestic and foreign visitors is also under



'Ilwan House

preparation. Both publications will be bilingual (Arabic and English). The second activity, a panel exhibition, will raise awareness of the aspects of Rosetta's Mediterranean culture as well as highlighting the exceptional monuments that are the result of these aspects. This was held in November 2008 in Amir Taz Palace in Cairo. The work in Cairo is carried out by a team from the GIS Center, which includes professionals in archaeology, Geographic Information Systems, law, database

development and publishing and is coordinated by members of the EAIS Association. The work in Rosetta is carried out in close cooperation with the local SCA inspectors.



Shaimaa Fouad, Archaeological Researcher at GIS Centre, participated in an ICCROM Course on Conservation and Management of Heritage sites in the Arab Region, under the patronage of H.H Dr. Sheikh Mohammed bin Sultan Al Qasimi, in Al-Sharjah, United Arab Emirates. The course took place between the 27th of October and 5th of December and focused on documenting and analyzing existing physical conditions of heritage sites, recognizing methods for identification of heritage sites and their significance and understanding the principle of heritage conservation processes.





GIS CENTER



Collaboration

French technical project in Luxor

In the framework of the cooperation between the French government and the Supreme Council of Antiquities (SCA), the French Ministry of Foreign and European Affairs made available to the GIS Centre a technical assistant, Mr. Alban Pimpaud, whose mission it is to elaborate, in the cooperation with the SCA, an accurate map and a 3D model of the West Bank Thebes, dealing with its outstanding cultural heritage sites. Another aspect of his mission will be to also provide, to the several stakeholders involved in that area (such as the Supreme Council of Luxor), a set of graphical models of development, in order to ensure the safeguarding of the monuments, and at the same time to improve their physical access and understanding for the audience (tourists and local inhabitants). The need for such tools is beyond questioning since the sites, standing on the edge between the desert and the cultivated area, are becoming more and more strained by the intense land use and the increased urbanization of their surroundings, as was shown already in the risk map of Luxor produced during the EAIS project. Moreover, the expected continuous



increase of tourism over the next years and decades will become

one of the main threats to these sites. That is why it is now crucial to foresee and to face these developments by the creation of comprehensive maps that will provide a background document for the management of the area of Western Thebes, and then to enable its interoperability with a wider site management plan dealing with the whole area of Luxor, embedding also Karnak and Luxor Temples. The first step of this mission started in April this year and will continue for two years.

KOICA Training

Within the framework of the bilateral cooperation between the Egyptian Ministry of Culture - represented by the Supreme Council of Antiquities (SCA) - and the Korean International Cooperation Agency (KOICA) - represented by the Embassy of the Republic of Korea - a four weeks training program was held in Seoul, Korea to raise the capacity of selected SCA staff members to carry out IT administration tasks of the CMIS project. The following staff members were selected by the GIS Center to participate in the training: eng. Hadi Alsherif, eng. Shehab El-Din Mohamed and eng. Hossam Khattab.



SCA GIS Center IT team with the Korean team

This Egyptian-Korean cooperation is represented in the CMIS project which aims to build an Infrastructure and Web-based Central Management Information System.

The purpose of this system is to improve the knowledge of the SCA IT engineers in Windows Servers 2008, Cisco Network environment and Database.

The Responsible of Translation and Publication at GIS Center, Shahira A. Hussein, was recently awarded a scholarship for further academic study and training in Germany by the DAAD. Encouraged by the management of the GIS Centre, she consequently spent two months (July and August) in Mannheim, Germany, studying at the IDS Institute.

We wish you all a
Happy New Year



GIS Centre

Supreme Council of Antiquities
3 Al-Adel Abou Bakr St., Zamalek, Cairo
Tel/Fax: (202) 2735 0287
Tel: (202) 2735 0289
e-mail: eais@eais.org.eg
Website: www.eais.org.eg

